

Temporal trends and prognostic impact of reperfusion modalities in Tunisian patients presenting with ST-elevation myocardial infarction: A 20-year analysis

Tendances temporelles et impact pronostique des modalités de reperfusion chez les patients Tunisiens se présentant pour infarctus avec sus-décalage du segment ST : Analyse sur 20 ans

Walid Jomaa, Ikram Chamtour, Nesrine Amdouni, Ahmed Turki, Khaldoun Ben Hamda

Cardiology B department, Fattouma Bourguiba University hospital and University of Monastir, Tunisia.

ABSTRACT

Introduction: With the advent of reperfusion therapies, management of patients presenting with ST-elevation myocardial infarction (STEMI) has witnessed significant changes during the last decades.

Aim: We sought to analyze temporal trends in reperfusion modalities and their prognostic impact over a 20-year period in patients presenting with STEMI the Monastir region (Tunisia).

Methods: Patients from Monastir region presenting for STEMI were included in a 20-year (1998-2017) single center registry. Reperfusion modalities, early and long-term outcomes were studied according to five four-year periods.

Results: Out of 1734 patients with STEMI, 1370 (79%) were male and mean age was 60.3 ± 12.7 years. From 1998 to 2017, primary percutaneous coronary intervention (PCI) use significantly increased from 12.5% to 48.3% while fibrinolysis use significantly decreased from 47.6% to 31.7% ($p < 0.001$ for both). Reperfusion delays for either fibrinolysis or primary PCI significantly decreased during the study period. In-hospital mortality significantly decreased from 13.7% during Period 1 (1998-2001) to 5.4% during Period 5 (2014-2017), ($p = 0.03$). Long-term mortality rate (mean follow-up 49.4 ± 30.7 months) significantly decreased from 25.3% to 13% ($p < 0.001$). In multivariate analysis, age, female gender, anemia on presentation, akinesia/dyskinesia of the infarcted area and use of plain old balloon angioplasty were independent predictors of death at long-term follow-up whereas primary PCI use and preinfarction angina were predictors of long-term survival.

Conclusions: In this long-term follow-up study of Tunisian patients presenting for STEMI, reperfusion delays decreased concomitantly to an increase in primary PCI use. In-hospital and long-term mortality rates significantly decreased from 1998 to 2017.

Key words: ST-elevation myocardial infarction, prognosis, myocardial reperfusion, primary percutaneous coronary intervention, Tunisia, North Africa

RÉSUMÉ

Introduction: Grace aux thérapeutiques de reperfusion, la prise en charge des patients se présentant pour infarctus du myocarde avec sus-décalage du segment ST (IDMST) a vécu une métamorphose durant les dernières décennies.

Méthodes: Les tendances en termes de reperfusion et de mortalité ont été analysées dans ce registre de 20 ans de patients se présentant pour IDMST dans la région de Monastir.

Résultats: Sur 1734 patients atteints d'IDMST, 1370 (79%) étaient des hommes et l'âge moyen était de $60,3 \pm 12,7$ ans. De 1998 à 2017, l'utilisation de l'intervention coronarienne percutanée (ICP) primaire est passée de 12,5% à 48,3%, tandis que l'utilisation de la fibrinolyse est passée de 47,6% à 31,7% ($p < 0,001$ pour les deux). La mortalité hospitalière est passée de 13,7% au cours de la période 1998-2001 à 5,4% au cours de la période 2014-2017 ($p = 0,03$). La mortalité à long terme (suivi moyen de $49,4 \pm 30,7$ mois) a significativement diminué de 25,3% à 13% ($p < 0,001$). En analyse multivariée, l'âge, le sexe féminin, l'anémie à la présentation, l'akinésie/dyskinésie de la région infarctée et l'utilisation de l'angioplastie par ballonnet ordinaire étaient des prédicteurs indépendants de décès à long terme, tandis que l'ICP primaire et l'angor pré-infarctus étaient des prédicteurs de survie à long terme.

Conclusions: Dans cette étude entre 1998 et 2017, les délais de reperfusion des IDMST ont diminué concomitamment à une augmentation de l'utilisation de l'ICP primaire. La mortalité hospitalière et à long terme a significativement diminué.

Mots clés: Infarctus du myocarde avec sus-décalage du ST, pronostic, reperfusion myocardique, intervention coronaire percutanée primaire, Tunisie, Afrique du Nord

Correspondance

Walid Jomaa

Cardiology B department, Fattouma Bourguiba University hospital and University of Monastir, Tunisia.

Email: jomaa_w@hotmail.fr

INTRODUCTION

In the last four decades, management of ST-elevation myocardial infarction (STEMI) has witnessed a significant transformation worldwide [1-3]. In Western countries, fibrinolytic therapy, antithrombotic treatments, and the implementation of primary percutaneous coronary intervention (PCI) networks led to a substantial decline in early and long-term mortality and complications [4-7]. Main modifications consisted in the rapid shift to primary PCI for over than 90% of patients with STEMI, the introduction of clopidogrel then of more potent anti P2Y12 antiplatelet agents, and the implementation of new lipid lowering drugs aiming at reducing atherosclerosis related events [2, 4, 8]. In countries of the Middle East and North Africa (MENA) region, STEMI management is still affected in one hand by a somewhat random access to reperfusion therapies and territorial discrepancies in coronary care units (CCU) distribution, and in the other, by insufficient patient follow-up and secondary prevention. In the last few years, available publications from national registries and surveys addressed the high cardiovascular risk profile that characterizes these patients and the dire short-term prognosis in this setting [9-11]. Reports concerning the progressive implementation of reperfusion therapeutics in STEMI over time and their potential long-term prognostic impact are clearly lacking.

In this study, we sought to delineate temporal trends in reperfusion therapy utilization, short and long-term mortality in patients presenting for STEMI in the Monastir region (Tunisia) over a 20-year study period.

METHODS

The current study was carried-out on data extracted from a single center retrospective registry. All consecutive patients aged 18 and older presenting to a major tertiary care facility in the Monastir region (Tunisia) for STEMI between January 1998 and December 2017 were enrolled. The registry was updated in a regular fashion (every 1 to 2 years) by two senior academic staff for data integrity, patient follow-up and outcomes. Patients presenting with STEMI were admitted via the emergency department (ED) or via the regional emergency medical service (EMS). STEMI diagnosis was retained in the presence of a significant ST-segment elevation (2 mm in precordial leads or 1 mm in frontal leads) in two contiguous leads on electrocardiogram (ECG) or in the presence of a presumably new left bundle branch block concomitantly to a prolonged (>20 minutes) chest pain or discomfort. For STEMI early management, medical staff in our department, our regional EMS as well as ED were basically implementing the European guidelines for the diagnosis and management of patients presenting with STEMI [12]. That is patients presenting to the ED or to a nearby healthcare facility (in the Monastir Governorate area) were whenever possible swiftly transferred for primary PCI. When long transfer delays (>90 to 120 minutes) were expected, and in the absence of contraindications, fibrinolytic therapy is administered then

patients are referred as soon as possible to our department for reassessment and potential rescue PCI or diagnostic invasive coronary angiography (ICA). Notwithstanding, the registry included patients with STEMI managed with no reperfusion therapy (conservative treatment) at the early phase. Reasons for that include late presentation, spontaneous reperfusion, very old age. At the exception of a negligible number, all patients received clopidogrel (loading dose of 300 or 600 mg and 75 mg/day thereafter), aspirin and intravenous unfractionated heparin or enoxaparin as recommended. In patients receiving fibrinolytic therapy, thrombolytic agents used included streptokinase, alteplase and tenecteplase. In case of primary or rescue PCI, dilatation balloons, bare metal/drug-eluting stents, thrombus aspiration and GP IIb-IIIa inhibitors were used at the operator's discretion, depending on availability and in accordance with European guidelines. Symptoms, transfer and reperfusion delays were estimated using ED and EMS records and during thrombolysis and PCI procedures. We opted to report the symptom-to-reperfusion delay, i.e symptom-to-fibrinolysis or symptom-to-balloon delay rather than door-to-needle or door-to-balloon time, due to a better availability of these data in patient files and to the good predictive value of total ischemic time for early outcomes in previous studies [13-15]. Risk profile, baseline demographic and clinical characteristics were specified in all patients upon admission. Routine biology tests were withdrawn in all patients according to local protocols. Creatinine clearance was calculated using the Modification of Diet in Renal Disease (MDRD) formula. For the purpose of the current study, chronic kidney disease was considered in patients presenting with a creatinine clearance ≤ 60 mL/min. In accordance with the World Health Organization criteria, anemia was defined as a hemoglobin rate < 13 g/dL in men and < 12 g/dL in women [16]. Transthoracic echocardiography was performed in the first 48 hours and anytime a complication was suspected. Parameters reported were left ventricle (LV) systolic and diastolic diameters, LV ejection fraction by the Simpson method, regional kinetic abnormalities, LV filling pressures and pulmonary pressures. Patients were observed in the coronary care unit (CCU) for at least 48 hours and put on adjunctive medications (beta blockers, statins, angiotensin converting enzyme inhibitors/angiotensin receptor blockers) as guideline recommended. Major bleeding was defined as any fatal, cerebral bleeding or overt bleeding mandating urgent transfusion. After discharge, patients were followed in outpatient clinics at one to two months, at 6 months, then biyearly. Patients lost to clinical follow-up were contacted by phone. Time between index STEMI and last follow-up or death was documented.

Statistical analysis

For the current analysis, the overall study period was divided into five periods of four years each: Period 1, from 1998 to 2001, Period 2, from 2002 to 2005, Period 3, from 2006 to 2009, Period 4, from 2010 to 2013, and Period 5, from 2014 to 2017. Trends in risk profile,

reperfusion therapy, early and long-term mortality were determined. Categorical variables are expressed in absolute values and percentages. Continuous variables are expressed in means ± SD or by median value and interquartile range in case of non-normal distribution. The chi-square test was applied to compare categorical variables. The one-way ANOVA or the Kruskal Wallis tests were applied to compare continuous variable means or medians between periods as appropriate. Kaplan Meier curves for long-term survival were represented according to the reperfusion strategy adopted (i.e., thrombolysis, primary PCI or no reperfusion). Log rank test was applied for comparison between different reperfusion modalities outcome. Independent long-term predictors of death or survival were determined using multivariable binary logistic regression applied on a variable set. Categorical variables chosen to be included in the multivariate model were determined using chi-square univariate analysis on long-term mortality (cut-off p for selection <0.2) in addition to other forced variables judged as relevant for the model. Odds and accompanying 95% confidence

intervals were reported and a p value <0.05 was set for statistical significance. Data collection and statistical analysis were performed using Statistical Package for Social Sciences (SPSS) V. 21 for Windows.

RESULTS

A total of 1734 patients presenting for STEMI were enrolled in the present study. Mean age was 60.3 ± 12.7 and 1370 (79%) were male. Prevalence of tobacco smoking, hypertension and diabetes mellitus in the overall study population was 66.8%, 30.1% and 35.9%, respectively. Baseline characteristics of study population according to study period are presented in table I. Prevalence of female gender in STEMI patients increased from 16.9% during Period 1 to 34.2% during Period 5 (p<0.001). Prevalence of classical cardiovascular risk factors remained relatively stable throughout the study periods at the exception of dyslipidemia that moderately

Table 1. Baseline characteristics according to study period.

	Period 1 [1998-2001] (n=473)	Period 2 [2002-2005] (n=495)	Period 3 [2006-2009] (n=263)	Period 4 [2010-2013] (n=188)	Period 5 [2014-2017] (n=315)	P
Mean age, ± SD	60.8 ± 12.8	61 ± 12.9	59.9 ± 12.2	58.5 ± 12.7	59.8 ± 12.4	0.15
Age ≥75 years	68 (14.4%)	79 (16%)	29 (11%)	23 (12.2%)	49 (15.6%)	0.34
Female Gender	80 (16.9%)	91 (18.4%)	47 (17.9%)	40 (21.3%)	106 (34.2%)	<0.001
Hypertension	131 (27.7%)	146 (29.5%)	99 (37.6%)	49 (26.1%)	97 (30.8%)	0.04
Diabetes Mellitus	168 (35.5%)	173 (34.9%)	96 (36.5%)	63 (33.5%)	123 (39%)	0.7
Hypercholesterolemia	52 (11%)	53 (10.7%)	32 (12.2%)	27 (14.4%)	56 (17.8%)	0.028
Current Smoker	309 (65.3%)	347 (70.1%)	167 (63.5%)	125 (66.5%)	211 (67%)	0.37
Prior STEMI	24 (5.1%)	29 (5.9%)	10 (3.8%)	6 (3.2%)	8 (2.5%)	0.002
Prior PCI	7 (1.7%)	21 (4.2%)	15 (5.7%)	15 (8%)	77 (24.4%)	<0.001
History of Heart Failure	11 (2.3%)	15 (3%)	3 (1.1%)	4 (2.1%)	5 (1.6%)	0.46
Peripheral Artery Disease	19 (4%)	17 (3.4%)	6 (2.3%)	6 (3.2%)	10 (3.2%)	0.80
Chronic Kidney Disease	41 (8.7%)	45 (9.1%)	15 (5.7%)	16 (8.5%)	16 (5.2%)	0.047

PCI, Percutaneous Coronary Intervention, STEMI, ST-elevation Myocardial Infarction.

Patients presented to ED or to EMS with chest pain in a large majority of cases (table II). Recourse to EMS for transport increased throughout study periods reaching 57.8% during Period 5. Although prevalence of cardiogenic shock on-presentation remained stable over time, heart failure on-presentation decreased significantly from 25.4% during Period 1 to 18.7% during Period 5 (p=0.008). Prevalence of patients undergoing ICA during hospitalization increased over time to reach 98.4% during Period 5. Prevalence of three vessel disease on ICA declined significantly from 28.4% in Period 1 to 14.5% in Period 5 (p<0.001).

Regarding reperfusion therapies (table III, Figure 1), thrombolysis was the most adopted strategy in Period 1 with 47.6%, significantly decreasing to 31.7% in Period 5 (p<0.001). Conversely, recourse to primary PCI increased over time from 12.5% in Period 1 to attain 48.3% in Period 5 (p<0.001).

As for reperfusion delays (i.e., symptom-to-fibrinolysis delay and symptom-to-primary PCI delay), and irrespective to reperfusion therapy, they steadily

decreased throughout the study period (table III).

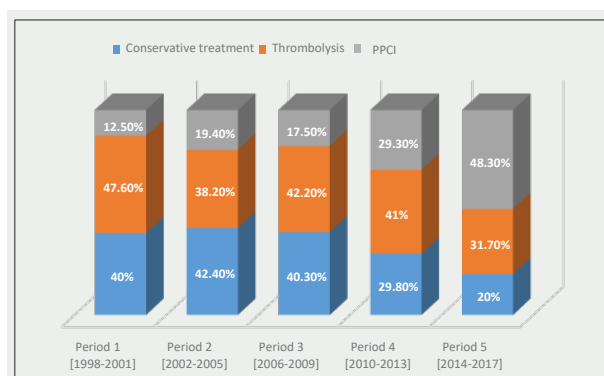


Figure 1. Trends in reperfusion strategies according to study period. PCI, primary percutaneous coronary intervention.

Table 2. Clinical characteristics on-presentation according to study period.

	Period 1 [1998-2001] (n=473)	Period 2 [2002-2005] (n=495)	Period 3 [2006-2009] (n=263)	Period 4 [2010-2013] (n=188)	Period 5 [2014-2017] (n=315)	P
Chest Pain on Presentation	435 (92%)	433 (87.5%)	245 (93.2%)	177 (94.1%)	306 (97.1%)	<0.001
Transport by EMS	229 (48.4%)	263 (53.1%)	107 (55.5%)	107 (56.9%)	182 (57.8%)	<0.001
Systolic Blood Pressure (mmHg), [IQR]	120 [110-140]	120 [110-140]	127 [115-150]	130 [120-145]	122 [110-140]	0.28
Heart Failure	120 (25.4%)	120 (24.2%)	49 (18.6%)	28 (14.9%)	59 (18.7%)	0.008
Cardiogenic Shock	17 (3.6%)	15 (3%)	9 (3.4%)	8 (4.3%)	10 (3.2%)	0.94
Q Wave on Presentation	231 (48.8%)	234 (47.3%)	80 (30.4%)	53 (28.2%)	85 (27%)	<0.001
LBBB	20 (4.2%)	21 (4.2%)	8 (3%)	5 (2.7%)	6 (1.9%)	0.034
Median Tn I Peak (µg/L), [IQR]	31.3 [3.5-352.1]	29.3 [3.9-236]	25 [4.3-123.1]	20.5 [1.9-109]	19.5 [2.3-89.6]	0.020
Median Plasma Creatinin (µmol/L), [IQR]	104 [90-122]	92 [78-114]	89 [76-106]	85 [74-103]	79 [68-98]	<0.001
Median Hemoglobin (g/dL), [IQR]	13.2 [12.1-14.5]	13.2 [12-14.5]	13.4 [12-14.8]	13.4 [12-14.8]	13.4 [12.1-14.4]	0.29
Anemia	90/473 (19%)	82/495 (16.5%)	39/263 (14.8%)	27/188 (14.3%)	42/310 (13.5%)	0.032
ICA	333 (70.4%)	406 (82%)	221 (84%)	179 (95.2%)	310 (98.4%)	<0.001
Normal Coronary Artery Angiogram	18 (5.4%)	6 (1.5%)	9 (4.1%)	2 (1.1%)	8 (2.6%)	0.074
Single Vessel Disease	160 (48%)	218 (53.7%)	120 (54.1%)	109 (60.9%)	196 (63.2%)	<0.001
3-Vessel Disease	134 (28.4%)	123 (24.9%)	47 (18%)	32 (17.3%)	46 (14.5%)	<0.001
LVEF <50%	97/229 (42.3%)	114/276 (41.3%)	39/101 (38.6%)	45/141 (31%)	82/295 (27.7%)	0.021
Akinesia/Dyskinesia of the infarcted area	73/229 (31.8%)	72/276 (26.1%)	24/101 (23.7%)	19/141 (13.4%)	21/295 (7.1%)	<0.001

EMS, Emergency Medical Service, ICA, Invasive Coronary Angiography, LBBB, Left Bundle Branch Block, LVEF, Left Ventricle Ejection Fraction, Tn I, Troponin I

Table 3. Trends in reperfusion modalities and delays over 20 years.

	Period 1 [1998-2001] (n=473)	Period 2 [2002-2005] (n=495)	Period 3 [2006-2009] (n=263)	Period 4 [2010-2013] (n=188)	Period 5 [2014-2017] (n=315)	P
Symptoms-to-FMC delay * (h), [IQR]	5 [4-8.25]	5 [3-6.25]	4 [3-6]	4 [3-6]	2 [1.5-5]	0.028
Thrombolysis	225 (47.6%)	189 (38.2%)	111 (42.2%)	77 (41%)	100 (31.7%)	<0.001
Symptom-to-thrombolysis delay (h), [IQR]	4 [3-6]	4 [3-7]	3 [2-4]	3 [2-4]	3 [2-4.75]	0.040
Primary PCI	59 (12.5%)	96 (19.4%)	46 (17.5%)	55 (29.3%)	152 (48.3%)	<0.001
Symptom-to-balloon delay (h), [IQR]	6 [3-16]	4 [2-7.75]	5 [3-8]	3,5 [1-6.25]	3 [1-4]	<0.001
Stent use	52 (85.2%)	89 (91.8%)	41 (89.1%)	52 (94.5%)	147 (96.7%)	0.042
Thrombus aspiration	0 (0%)	1 (1%)	1 (2.2%)	4 (7.3%)	7 (4.6%)	0.013
POBA only	112/309 (36.2%)	103/395 (26%)	52/233 (22.3%)	29/168 (17.2%)	12/226 (5.3%)	<0.001

* Symptoms-to-FMC delay was calculated for the overall study population. FMC, First Medical Contact, PCI, Percutaneous Coronary Intervention, POBA, Plain Old Balloon Angioplasty

In-hospital complications and mortality are presented in table IV. In summary, ventricular arrhythmia, new-onset atrial fibrillation and major bleeding significantly decreased from Period 1 to Period 5. In-hospital mortality significantly decreased from 13.7% during Period 1 to 5.4% during Period 5 (p=0.03). Mean long-term follow-up was 49.4 ± 30.7 months in the overall population, with an overall long-term mortality rate of 19.4%. Long-

term mortality rate decreased significantly from 25.3% (mean follow-up 40.3 ± 25.7 months) during Period 1 to 13% (mean follow-up 47 ± 23.9 months) during Period 5 (p<0.001). Figure 2 illustrates Kaplan Meier curves for long-term survival according to reperfusion strategy used with better long-term survival for patients treated with primary PCI compared to those treated with fibrinolysis or with no reperfusion therapy (log-rank p<0.001).

Table 4. In-hospital complications and mortality according to study period.

	Period 1 [1998-2001] (n=473)	Period 2 [2002-2005] (n=495)	Period 3 [2006-2009] (n=263)	Period 4 [2010-2013] (n=188)	Period 5 [2014-2017] (n=315)	P
RV Infarction	19 (4%)	21 (4.2%)	6 (2.3%)	7 (3.7%)	15 (4.8%)	0.62
Ventricular arrhythmia	22 (4.7%)	17 (3.4%)	9 (3.4%)	6 (3.2%)	7 (2.2%)	0.01
Atrioventricular Block	49 (10.4%)	50 (10.1%)	43 (16.3%)	38 (20.2%)	57 (18.1%)	0.72
New Onset Atrial Fibrillation	39 (8.2%)	34 (6.9%)	11 (4.2%)	7 (3.7%)	11 (3.5%)	0.019
Major Bleeding	21 (4.4%)	13 (2.6%)	6 (2.3%)	4 (2.1%)	6 (1.9%)	0.019
In-hospital mortality	64 (13.7%)	53 (10.7%)	22 (8.4%)	16 (8.5%)	17 (5.4%)	0.03
Mean follow-up (months), ± SD	40.3 ± 25.7	50.2 ± 33	61.1 ± 35.4	53.6 ± 32	47 ± 23.9	<0.001
Long-term mortality	120 (25.3%)	98 (19.8%)	48 (18.3%)	29 (15.4%)	41 (13%)	<0.001

RV, Right Ventricle

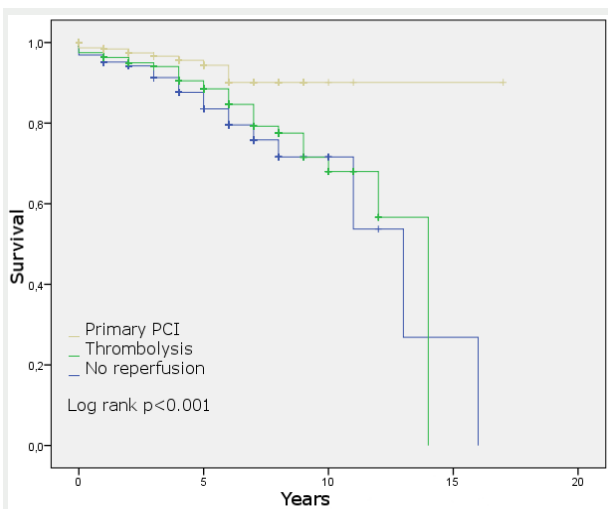


Figure 2. Kaplan Meier curves for long-term survival according to reperfusion strategy.

PCI, Percutaneous coronary intervention

In multivariate analysis, factors independently associated to long-term mortality (table V) include age (OR=1.08 by year of age, 95% CI: 1.05-1.11, $p < 0.001$), female gender (OR=3.02, 95% CI: 1.54-5.89, $p = 0.001$), anemia on-presentation (OR=2.54, 95% CI: 1.24-5.21, $p = 0.011$), akinesia or dyskinesia of the infarcted area on rest echocardiography (OR=3.01, 95% CI: 1.55-5.84, $p = 0.001$) and plain old balloon angioplasty in patients receiving PCI (OR=2.81, 95% CI: 1.47-5.39, $p = 0.002$). Conversely, factors independently associated to long-term survival were primary PCI (OR=0.31, 95% CI: 0.17-0.58, $p < 0.001$), and preinfarction angina (OR=0.35, 95% CI: 0.17-0.74, $p = 0.006$).

Table 5. Factors independently associated to long-term death in multivariate analysis.

Variable	P	OR	95% Confidence Interval
Age (by year)	<0.001	1.08	1.05 - 1.11
Female Gender	0.001	3.02	1.54 - 5.89
Anemia on-presentation	0.011	2.54	1.24 - 5.21
Akinesia/Dyskinesia of the infarcted area	0.001	3.01	1.55 - 5.84
Primary PCI	<0.001	0.31	0.17 - 0.58
POBA only	0.002	2.81	1.47 - 5.39
Preinfarction angina	0.006	0.35	0.17 - 0.74

PCI, Percutaneous Coronary Intervention, POBA, Plain Old Balloon Angioplasty

DISCUSSION

The current study presents a unique depiction of major changes in epidemiological characteristics, clinical presentation, management, early and long-term mortality in Tunisian patients presenting for STEMI in a main tertiary care facility over a 20-year period. To the best of our knowledge, this is the first large study from a North African country that focuses on trends in reperfusion modalities in STEMI with such a long inclusion period and clinical follow-up.

The first observation we depict herein is the heavy burden of cardiovascular risk factors in Tunisian patients with STEMI that was overall stable along the study

duration. These findings remain in line with those from Gulf registries [17-19] and at a lesser extent with major western STEMI registries where prevalence of classical coronary risk factors, diabetes mellitus and tobacco smoking in particular, are lower than reported in the present study [6, 8, 20, 21]. Another important fact is the tangible increase in female gender prevalence along the 20-year study period. This may have a substantial impact on informing management strategies to be implemented given the higher prevalence of comorbidities and the risk of complications and mortality in women compared to men documented in several reports [22-24].

It is remarkable that from 1998 to 2017, recourse to fibrinolysis decreased progressively along with a gradual increase in primary PCI use. This is actually related to several factors including the progressive adoption of the European guidelines by the different protagonists involved in STEMI patient care, better logistics, and better availability of catheterization platform and personnel. Primary PCI for STEMI is nowadays the gold standard for STEMI management when performed timely by experienced operators. Its superiority over fibrinolysis regarding survival, reinfarction, revascularization, and heart failure occurrence has been largely demonstrated [25]. In concurrence with that, survival analysis in the current study suggests similar findings demonstrating better long-term outcomes with primary PCI in comparison to fibrinolysis or no immediate reperfusion. Likewise, primary PCI use was found to be an independent predictor of better long-term survival in multivariable analysis. Nevertheless, fibrinolysis as a reperfusion therapy in acute STEMI remains a viable option in developing countries especially when utilized as part of the pharmacoinvasive strategy and when new fibrinolytic agents are administered by EMS [26, 27]. In parallel with the shift in reperfusion modalities, we witnessed a decrease in symptom-to-reperfusion delays in the overall study population and for each reperfusion modality, which has been proven to impact early and late outcomes in STEMI. Although symptom-to-reperfusion delay does not strictly equal total ischemic time, it seems to be a good surrogate to the latter in clinical practice [28, 29]. Furthermore, total ischemic time also depends on the time to first medical contact, a parameter that is highly dependent on the patient himself. Higher recourse to transport by EMS and better awareness of the Tunisian population about cardiovascular disease are possible explanations to the decreasing trend we observed in all these delays.

It is also interesting to notice that concomitantly to the decreasing trend in reperfusion delays, in-hospital complications and mortality declined. Indeed, between 1998 and 2017, in-hospital mortality has been more than halved with more than 8% absolute reduction. Although a causative relationship between the two phenomena may be evoked, such a conclusion should not be systematically drawn due to the multitude of other factors impacting early and long-term survival in patients with STEMI. Reduction in reperfusion delays as well as the adoption of evidence-based secondary prevention therapeutics were broadly investigated in European registries with obvious

impact on early and late outcomes in patients presenting with STEMI [3, 21, 30].

Among long-term predictors of death in the current study, most of them were already reported in previous studies, although mitigated in some instances like female gender and plain old balloon angioplasty [31, 32]. One unique factor reported herein is the occurrence of preinfarction angina that was associated with better long-term survival in patients presenting for STEMI. Preinfarction angina is frequently regarded as synonymous with ischemic preconditioning, a phenomenon found to be associated to lesser infarct size in animal as well as human studies [33, 34]. Further investigation as for actual clinical significance and factors associated with ischemic preconditioning in our context is warranted.

Study limitations

Although highly informative about STEMI risk profile, management and prognosis in the Tunisian context, our study entails several limitations that have to be acknowledged. First, the retrospective character of the study made it difficult to draw any firm conclusion regarding a cause-effect relationship between patients' characteristics and management on one hand and early and late outcomes on the other. Some variables such as vascular access route and type of stent implanted were not reported herein due to the lack of accuracy in reporting them in some patients' files. Although we insist that a great majority of patients received pharmacological therapeutics for secondary prevention according to contemporary guidelines, prevalence of their use and doses were not studied. Such therapeutics have plausibly a substantial effect on the improvement observed in the prognosis of patients presenting with STEMI in most of international studies. Finally, long-term outcomes other than mortality (such as ischemia driven revascularization or heart failure) were not studied.

CONCLUSIONS

By observing actual trends over 20 years in reperfusion strategies in STEMI patients in a Tunisian region, the current study demonstrated an upward evolution in primary PCI use concomitant to a significant reduction in reperfusion delays. These facts were associated to a decrease in early and long-term mortality in STEMI patients.

List of abbreviations

CCU: Coronary care units
ED: Emergency department
EMS: Emergency medical service
ICA: Invasive coronary angiography
MDRD: Modification of Diet in Renal Disease
MENA: Middle East and North Africa
PCI: Percutaneous coronary intervention
SPSS: Statistical Package for Social Sciences
STEMI: ST-elevation myocardial infarction

REFERENCES

1. Nabel EG, Braunwald E. A tale of coronary artery disease and myocardial infarction. *N Engl J Med.* 2012 Jan 5;366(1):54-63.
2. Windecker S, Hernández-Antolín RA, Stefanini GG, Wijns W, Zamorano JL. Management of ST-elevation myocardial infarction according to European and American guidelines. *EuroIntervention* 2014 Aug;10 Suppl T:T23-31.
3. Li J, Li X, Wang Q, Hu S, Wang Y, Masoudi FA, Spertus JA, Krumholz HM, Jiang L; China PEACE Collaborative Group. ST-segment elevation myocardial infarction in China from 2001 to 2011 (the China PEACE-Retrospective Acute Myocardial Infarction Study): a retrospective analysis of hospital data. *Lancet.* 2015 Jan 31;385(9966):441-51.
4. Ibanez B, James S, Agewall S, Antunes MJ, Bucciarelli-Ducci C, Bueno H. et al. 2017 ESC Guidelines for the management of acute myocardial infarction in patients presenting with ST-segment elevation: The Task Force for the management of acute myocardial infarction in patients presenting with ST-segment elevation of the European Society of Cardiology (ESC). *Eur Heart J.* 2018 Jan 7;39(2):119-177.
5. O'Gara PT, Kushner FG, Ascheim DD, Casey DE, Chung MK, de Lemos JA. et al. 2013 ACCF/AHA guideline for the management of ST-elevation myocardial infarction: a report of the American College of Cardiology Foundation/American Heart Association Task Force on Practice Guidelines. *Circulation.* 2013 Jan 29;127(4):e362-425.
6. Puymirat E, Simon T, Steg PG, Schiele F, Guéret P, Blanchard D. et al. Association of changes in clinical characteristics and management with improvement in survival among patients with ST-elevation myocardial infarction. *JAMA.* 2012 Sep 12;308(10):998-1006.
7. Szummer K, Wallentin L, Lindhagen L, Alfredsson J, Erlinge D, Held C. et al. Improved outcomes in patients with ST-elevation myocardial infarction during the last 20 years are related to implementation of evidence-based treatments: experiences from the SWEDEHEART registry 1995-2014. *Eur Heart J.* 2017 Nov 1;38(41):3056-3065.
8. Puymirat E, Simon T, Cayla G, Cottin Y, Elbaz M, Coste P. et al. Acute Myocardial Infarction: Changes in Patient Characteristics, Management, and 6-Month Outcomes Over a Period of 20 Years in the FAST-MI Program (French Registry of Acute ST-Elevation or Non-ST-Elevation Myocardial Infarction) 1995 to 2015. *Circulation.* 2017 Nov 14;136(20):1908-1919.
9. Moustaghfir A, Haddak M, Mechmeche R. Management of acute coronary syndromes in Maghreb countries: The ACCESS (ACute Coronary Events - a multinational Survey of current management Strategies) registry. *Arch Cardiovasc Dis.* 2012 Nov;105(11):566-77.
10. Jomaa W, Hamdi S, Ben Ali I, Azaiez MA, El Hraiech A, Ben Hamda K. et al. Risk profile and in-hospital prognosis in elderly patients presenting for acute ST-elevation myocardial infarction in the Tunisian context. *Indian Heart J.* 2016 Nov-Dec;68(6):760-765.
11. Addad F, Mahdhaoui A, Gouider J, Boughzela E, Kamoun S, Boujnah MR et al. Management of patients with acute ST-elevation myocardial infarction: Results of the FAST-MI Tunisia Registry. *PLoS One.* 2019 Feb 22;14(2):e0207979.
12. Steg PG, James SK, Atar D, Badano LP, Blömmström-Lundqvist C, Borger MA. et al. ESC Guidelines for the management of acute myocardial infarction in patients presenting with ST-segment elevation. *Eur Heart J.* 2012 Oct;33(20):2569-619.
13. Shiomi H, Nakagawa Y, Morimoto T, Furukawa Y, Nakano A, Shirai S. et al. Association of onset to balloon and door to balloon time with long term clinical outcome in patients with ST elevation acute myocardial infarction having primary percutaneous coronary intervention: observational study. *BMJ.* 2012 May 23;344:e3257.
14. Solhpour A, Chang KW, Arain SA, Balan P, Loghin C, McCarthy JJ. et al. Ischemic time is a better predictor than door-to-balloon time for mortality and infarct size in ST-elevation myocardial infarction. *Catheter Cardiovasc Interv.* 2016 Jun;87(7):1194-200.
15. Greulich S, Mayr A, Gloekler S, Seitz A, Birkmeier S, Schäufele T. et al. Time-Dependent Myocardial Necrosis in Patients With ST-Segment-Elevation Myocardial Infarction Without Angiographic Collateral Flow Visualized by Cardiac Magnetic Resonance Imaging: Results From the Multicenter STEMI-SCAR Project. *J Am Heart Assoc.* 2019 Jun 18;8(12):e012429.

16. World Health Organization. Iron deficiency anaemia: assessment, prevention, and control. A guide for programme managers. Geneva, Switzerland: World Health Organization; 2001. Available at: http://www.who.int/nutrition/publications/micronutrients/anaemia_iron_deficiency/WHO_NHD_01.3/en/index.html
17. Zubaid M, Rashed WA, Almahmeed W, Al-Lawati J, Sulaiman K, Al-Motarreb A. et al. Management and outcomes of Middle Eastern patients admitted with acute coronary syndromes in the Gulf Registry of Acute Coronary Events (Gulf RACE). *Acta Cardiol.* 2009 Aug;64(4):439-46.
18. Shehab A, Al-Dabbagh B, AlHabib KF, Alsheikh-Ali AA, Almahmeed W, Sulaiman K. et al. Gender disparities in the presentation, management and outcomes of acute coronary syndrome patients: data from the 2nd Gulf Registry of Acute Coronary Events (Gulf RACE-2). *PLoS One.* 2013;8(2):e55508.
19. AlHabib KF, Sulaiman K, Al Suwaidi J, Almahmeed W, Alsheikh-Ali AA, Amin H. et al. Patient and System-Related Delays of Emergency Medical Services Use in Acute ST-Elevation Myocardial Infarction: Results from the Third Gulf Registry of Acute Coronary Events (Gulf RACE-3Ps). *PLoS One.* 2016; 11(1): e0147385.
20. Fox KAA, Steg PG, Eagle KA, Goodman SG, Anderson FA, Granger CB. et al. Decline in rates of death and heart failure in acute coronary syndromes, 1999-2006. *JAMA.* 2007 May 2;297(17):1892-900.
21. Puymirat E, Schiele F, Steg PG, Blanchard D, Isorni MA, Silvain J. et al. Determinants of improved one-year survival in non-ST-segment elevation myocardial infarction patients: insights from the French FAST-MI program over 15 years. *Int J Cardiol.* 2014 Nov 15;177(1):281-6.
22. Pancholy SB, Subash Shantha GP, Patel T, Cheskin LJ. Sex differences in short-term and long-term all-cause mortality among patients with ST-segment elevation myocardial infarction treated by primary percutaneous intervention: a meta-analysis. *JAMA Intern Med.* 2014 Nov;174(11):1822-30.
23. Cenko E, Yoon J, Kedev S, Stankovic G, Vasiljevic Z, Krljanac G. et al. Sex Differences in Outcomes After STEMI: Effect Modification by Treatment Strategy and Age. *JAMA Intern Med.* 2018 May 1;178(5):632-639.
24. Chamtoury I, Souissi R, Amdouni N, Jomaa W, Abdallah W, Hamda KB. et al. ST-segment Elevation Myocardial Infarction in North African Women: Results From a Twenty-year Experience. *J Saudi Heart Assoc.* 2022 Nov 10;34(3):166-174.
25. Keeley EC, Boura JA, Grines CL. Primary angioplasty versus intravenous thrombolytic therapy for acute myocardial infarction: a quantitative review of 23 randomised trials. *Lancet.* 2003 Jan 4;361(9351):13-20.
26. Armstrong PW, Gershlick AH, Goldstein P, Wilcox R, Danays T, Lambert Y et al. Fibrinolysis or primary PCI in ST-segment elevation myocardial infarction. *N Engl J Med.* 2013 Apr 11;368(15):1379-87.
27. Danchin N, Popovic B, Puymirat E, Goldstein P, Belle L, Cayla G et al. Five-year outcomes following timely primary percutaneous intervention, late primary percutaneous intervention, or a pharmaco-invasive strategy in ST-segment elevation myocardial infarction: the FAST-MI programme. *Eur Heart J.* 2020 Feb 14;41(7):858-866.
28. Denktas AE, Anderson HV, McCarthy J, Smalling RW. Total ischemic time: the correct focus of attention for optimal ST-segment elevation myocardial infarction care. *JACC Cardiovasc Interv.* 2011 Jun;4(6):599-604.
29. Khowaja S, Ahmed S, Kumar R, Shah JA, Khan KA, Khan NU. et al. Time to think beyond door to balloon time: significance of total ischemic time in STEMI. *Egypt Heart J.* 2021 Oct 29;73(1):95.
30. Jernberg T, Johanson P, Held C, Svennblad B, Lindbäck J, Wallentin L. Association between adoption of evidence-based treatment and survival for patients with ST-elevation myocardial infarction. *JAMA.* 2011 Apr 27;305(16):1677-84.
31. Singh M, Reeder GS, Jacobsen SJ, Weston S, Killian J, Roger VL. Scores for post-myocardial infarction risk stratification in the community. *Circulation.* 2002 Oct 29;106(18):2309-14.
32. Eng Wei Tang 1, Cheuk-Kit Wong, Peter Herbison. Global Registry of Acute Coronary Events (GRACE) hospital discharge risk score accurately predicts long-term mortality post acute coronary syndrome. *Am Heart J.* 2007 Jan;153(1):29-35.
33. Reiter R, Henry TD, Traverse JH. Pre-infarction Angina Reduces Infarct Size in ST-Elevation Myocardial Infarction Treated with Percutaneous Coronary Intervention. *Circ Cardiovasc Interv.* 2013 Feb 1; 6(1): 52–58.
34. Wever KE, Hooijmans CR, Riksen NP, Sterenborg TB, Sena ES, Ritskes-Hoitinga M. et al. Determinants of the Efficacy of Cardiac Ischemic Preconditioning: A Systematic Review and Meta-Analysis of Animal Studies. *PLoS One.* 2015 Nov 18;10(11):e0142021.